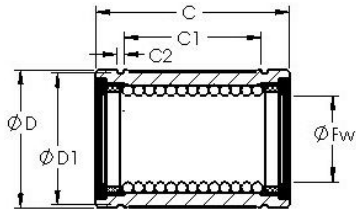


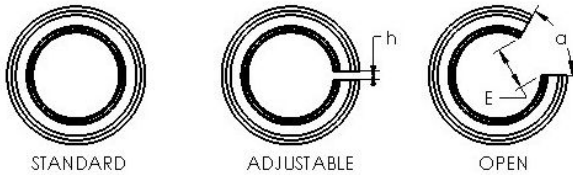


TRANSMISSIONS?BEARINGS EUROPE



AST LBB 16 linear bearings

Bearing No. LBB 16



Bore Diameter	25,4 mm
Bearing Type	standard type
Dynamic Load Rating (Cr)	241
Static Load Rating (Cor)	665
Shaft Dia. (Fw)	1.000
Outside Dia. (D)	1.563
Length (C)	2.250
Groove-to-groove length (C1)	1.753
Groove Width (C2)	0.068
Groove Dia. (D1)	1.490
Weight (g)	147.00
Material	52100 chrome steel, or equivalent

LBB 16 Bearing 2D drawings and 3D CAD models